

International Navigation Conference

Championing Scottish Science

Professor Sheila Rowan, MBE
Chief Scientific Adviser for Scotland

Edinburgh International Conference Centre
19 November 2019

Scotland – A Maritime Nation



"View in Leith Docks", 1860, George Washington Wilson
Creative Commons - CC by NC

NATIONAL GALLERIES SCOTLAND



THE ROYAL YACHT
BRITANNIA
EDINBURGH

Professor Sheila Rowan, MBE Chief Scientific Adviser for Scotland

 @ScotSciChief



The CSA sits where science and policy meet, and has three key priorities:

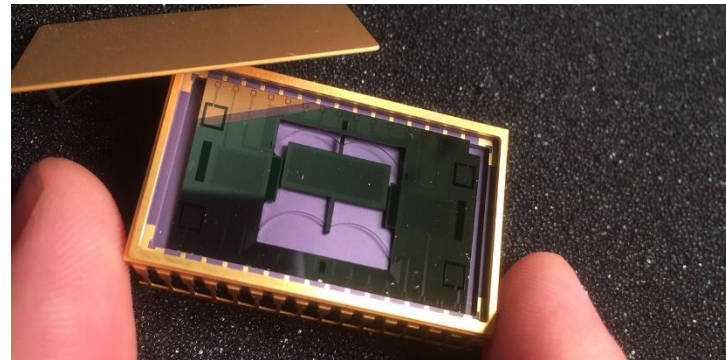
- **Science for Policy** – use of independent science advice in SG
- **Policy for Science** – contributing to policy in science areas,
- **Science for Society** – public events and supporting science public engagement sector

Also championing Scottish scientific excellence, nationally and overseas

Promoting Scottish research, business and innovation



Taking research into viable commercial markets



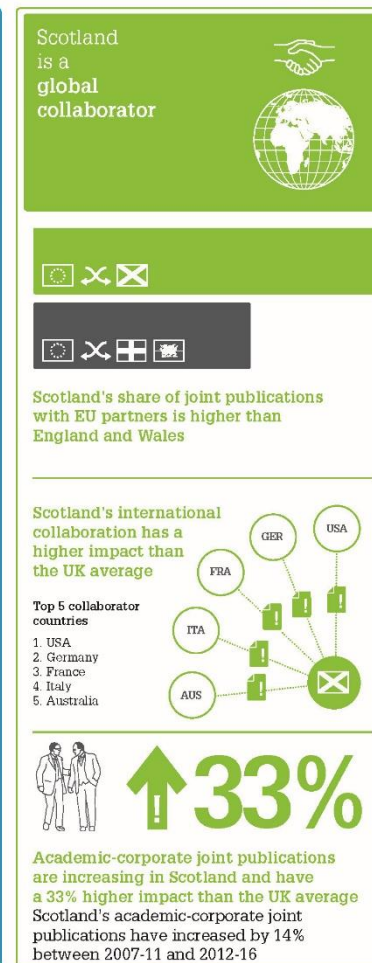
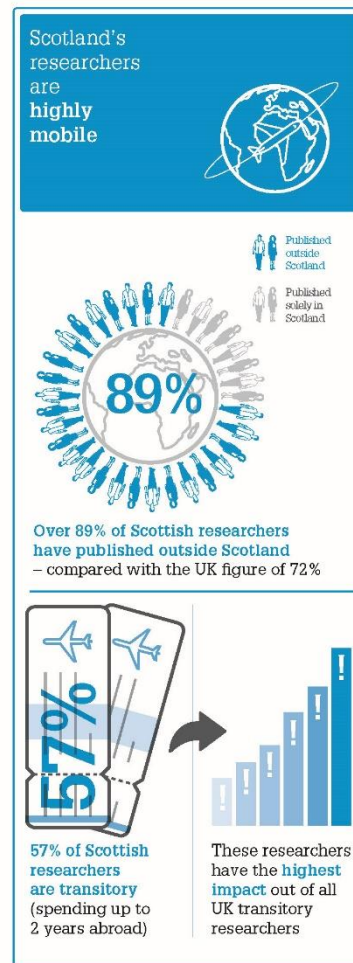
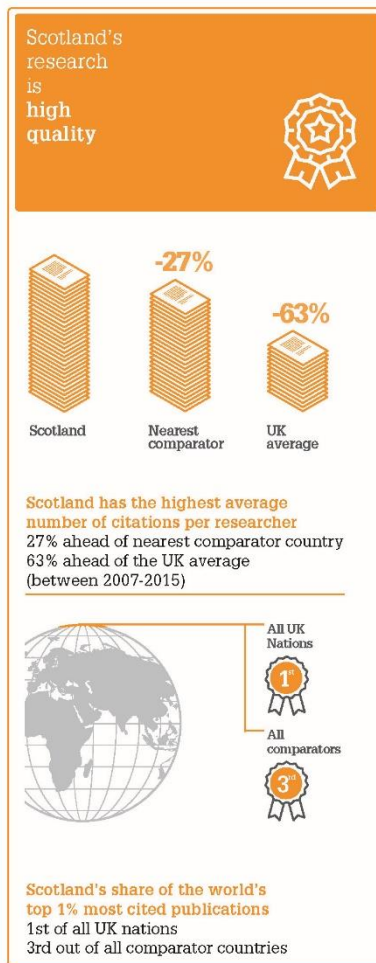
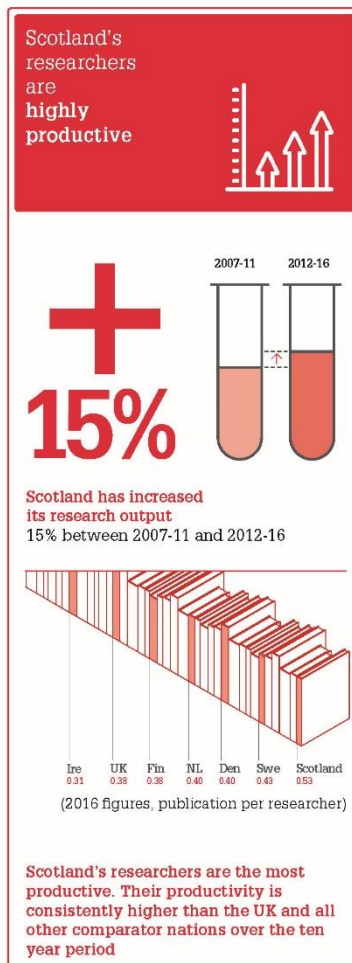
Scottish Science Advisory Council



Scotland's Science Landscape Report



Scotland's Science Strengths



Scottish space sector

- Space sector in Scotland has grown by over 70% since 2010
- In 2017 the sector in Scotland had a turnover of £2.7 billion
- Employing around 7,500 people

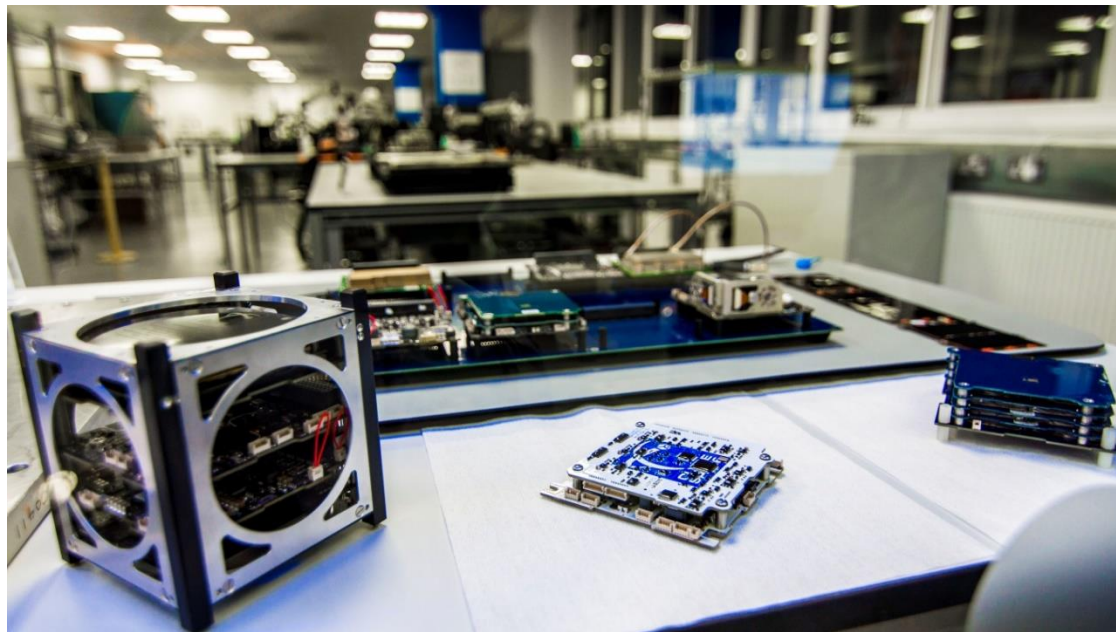


Image courtesy of Clyde Space: 1U CubeSat in build alongside subsystems

Global collaboration

